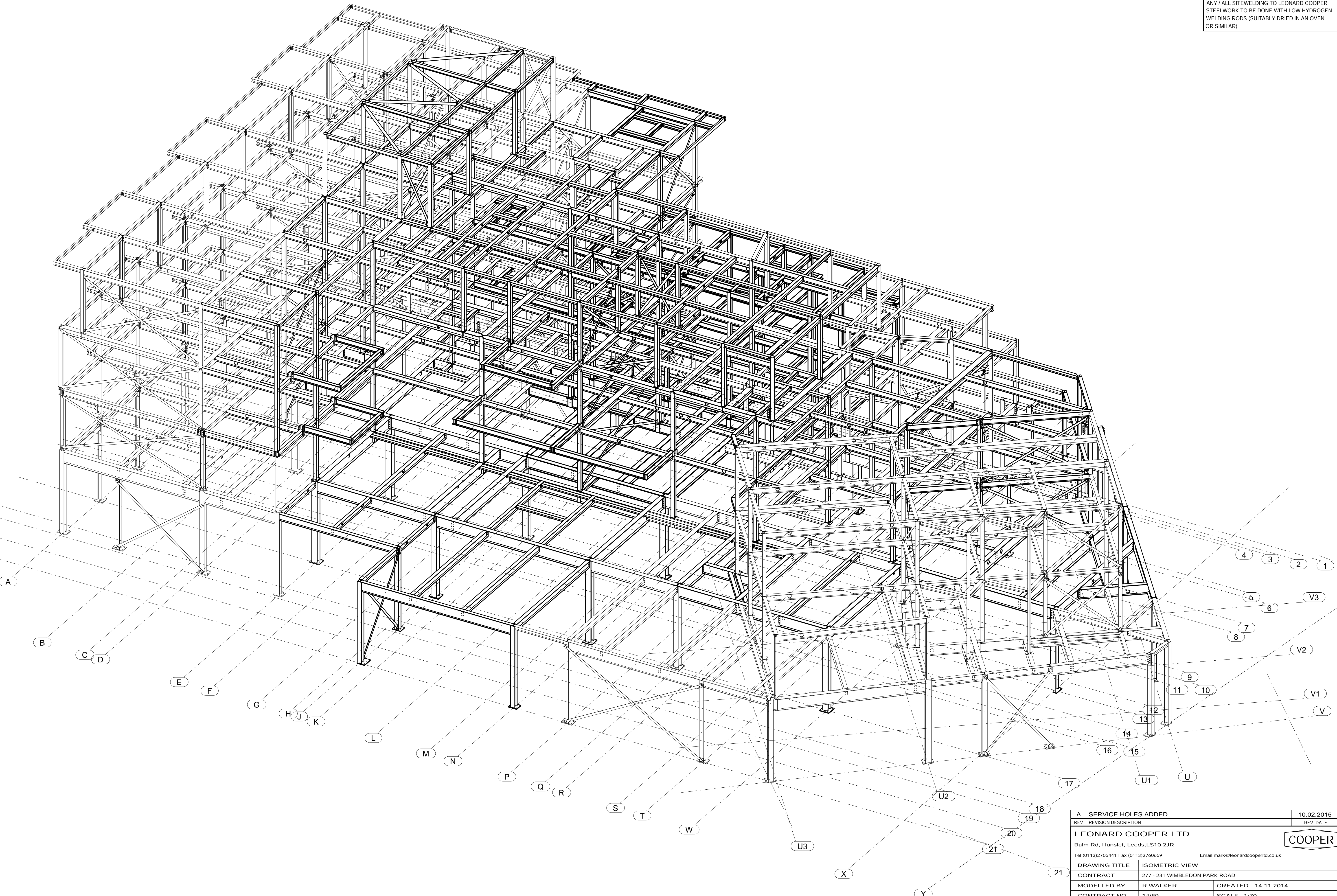


ANY / ALL SITEWELDING TO LEONARD COOPER
STEELWORK TO BE DONE WITH LOW HYDROGEN
WELDING RODS (SUITABLY DRIED IN AN OVEN
OR SIMILAR)



REV	DESCRIPTION	REV DATE
A	SERVICE HOLES ADDED.	10.02.2015
LEONARD COOPER LTD		
Balm Rd, Hunslet, Leeds, LS10 2JR		
Tel (0113)2705441 Fax (0113)2760659 Email: mark@leonardcooperltd.co.uk		
DRAWING TITLE	ISOMETRIC VIEW	
CONTRACT	277 - 231 WIMBLEDON PARK ROAD	
MODELLED BY	R WALKER	CREATED 14.11.2014
CONTRACT NO	14/89	SCALE 1:70
ALL WORK ON THIS DRAWING TO CE MARKING EXECUTION CLASS 2		
DRAWING No	GA010	REVISION No. A

